

# WEBCAST/ONSITE AUCTION

As Authorized by the  
Court Approved Receiver



**STACEY ELECTRIC**<sup>®</sup>  
COMPANY LIMITED

## Huge Offering of Electrical Inventory & Equipment *including More than \$750,000 in New Wire Inventory*



**Thursday, September 25<sup>th</sup> • 10:00 am Local Time**  
**Toronto (Ontario), Canada**

As Authorized by the Court Approved Receiver



## AUCTION DATE

**THURSDAY, SEPTEMBER 25<sup>TH</sup>**  
BEGINNING AT 10:00AM LOCAL TIME

## PREVIEW DATE

**WEDNESDAY, SEPTEMBER 24<sup>TH</sup>**  
9AM TO 5PM LOCAL TIME

FOR EARLIER INSPECTION, PLEASE CONTACT  
CASSIDY BAKER AT 416-252-1955 OR EMAIL  
CBAKER@HILCOGLOBAL.COM

## AUCTION & PREVIEW LOCATION

179 BARTLEY DRIVE  
TORONTO, ONTARIO M4A 1E8 CANADA

## DIRECTIONS

**FROM TORONTO PEARSON INTERNATIONAL AIRPORT:** EXIT AIRPORT TO ON-401 E. TO DON VALLEY PKWY S. TURN LEFT ONTO EGLINGTON AVE E, THEN RIGHT ONTO BERMONDSEY RD. TAKE THE FIRST LEFT ONTO BARTLEY DR, AND FOLLOW SIGNS TO SALE.

## FURTHER INFORMATION

- A 15% BUYER'S PREMIUM WILL BE CHARGED FOR ALL ONSITE SALES. AN 18% BUYER'S PREMIUM WILL BE CHARGED FOR ALL BIDSPOTTER SALES. ACCEPTING CANADIAN CURRENCY.
- REMOVAL DEADLINE FRIDAY, OCTOBER 3<sup>RD</sup> (NO EXCEPTIONS) WITH HOURS OF REMOVAL BETWEEN 8AM TO 4PM MONDAY THRU FRIDAY. BUYERS WITH ITEMS LEFT ON SITE AFTER DEADLINE ARE SUBJECT TO FINES OF \$500 PER DAY.

## MACHINERY & EQUIPMENT

ODD KNUDSEN +1 416-252-1955 • OKNUDSEN@HILCOGLOBAL.COM

## PAYMENT INFORMATION

FRANCA GUIDA AT 416-252-1955 OR EMAIL FGUIDA@HILCOGLOBAL.COM

## CUSTOMER SERVICE

+1 877-37-HILCO • +1 616-732-1800 • INFO@HILCOIND.COM

CASSIDY BAKER AT 647-221-4248 OR EMAIL CBAKER@HILCOGLOBAL.COM

*Information contained herein deemed to be accurate at time of printing and subject to change. For updated information, please visit our website at [www.hilcoind.com](http://www.hilcoind.com) for any changes to date, sale process, terms and conditions and list of available assets.*

The Auction Will Be Conducted  
Onsite and Online at



## (800) SPOOLS ELECTRICAL WIRE INVENTORY (New - Over \$750,000 Cost)



- 35 - **SPOOLS OF 2 AWG** -3000 Meters General/Belden/Impulse 2 AWG, 7 Strand, Red / Grey / Black / Beige / Blue Insulated Copper Wire
- 16 - **SPOOLS OF 3 AWG** -5000 Meters General / Domtech / Shawflex / Prysmian 3 AWG, 2/7/10 Strand, Red / Blue / Beige / White / Black / Green Insulated Copper Wire
- 181 - **SPOOLS OF 4 AWG** -60,000 Meters General/Belden/Prysmian 4 AWG, 7 Strand, Red / Black / Blue / Beige / White Insulated Copper Wire
- 192 - **SPOOLS OF 6 AWG** -32,200 Meters General / Prysmian / Belden / Carol / Southwire / Cabletech 6 AWG, 7 Strand, Red / Black / Blue / Beige / White Insulated Copper Wire
- 102 - **SPOOLS OF 8 AWG** -29,500 Meters General / Belden / Southwire / Impulse / Nexus 8 AWG, 7 Strand, Red / Black / Blue / Beige / White / Green Insulated Copper Wire
- 9 - **SPOOLS OF 9 AWG** -4,700 Meters General 9 AWG, 7 Strand, Blue Insulated Copper Wire
- 41 - **SPOOLS OF 10 AWG** -3,100 Meters General / Domtech / Belden / Impulse / 10 AWG, 7 Strand, Red / Black / Blue / Beige / White Insulated Copper Wire
- 79 - **SPOOLS OF 12 AWG** -5,400 Meters General / Cabletech / Belden / Deka 12 AWG, 10 Strand, White / Green / Black Insulated Copper Wire
- 134 - **SPOOLS OF 14 AWG** -20,800 Meters General / Domtech / Deka / Anixter / Southwire / Belden / Falcon & Impulse 14 AWG, 7 Strand, Black / Grey Insulated Copper Wire
- 10 - **SPOOLS OF 20 AWG** -1285 Meters of Belden / Deka / Carol / Priority 20 AWG, 7 Strand, Grey / Black Insulated Copper Wire





## LED TRAFFIC LIGHT & LANE CONTROL INVENTORY

### (NEVER USED)

**HUGE QUANTITY OF INVENTORY, Including:** Aluminum Conduit Aluminum Light Stands, Traffic Light Components, Polycarbonate LED Pedestrian Traffic Lights, Phillips Helios Roadway Luminaire, American Electric Lighting Aluminum Street Lights & Q-Seal Gel, (200) Excellence Opto Inc. TRV-G08SG-D1T Traffic Lights, Quantity of Excellence Opto Inc. Bi-Colour Arrow Signals, (150) Excellence Opto Inc. TRP-C30DD2C3 Bi-Colour Pedestrian Traffic Signals, Street Signs, Traffic Light Controllers

### (21) SHIPPING CONTAINERS

- 3 – EVERGREEN & NORTH QUEEN 40' SEA CONTAINERS, (2005/03)
- 1 – P.T. JAVA PACIFIC 40' SEA CONTAINER, S/N JP083595, (1999), (3) Roll Up Doors
- 4 – CHANGZHOU INTERNATIONAL 40' SEA CONTAINERS, (1998/95)
- 3 – CIMC MODEL 1CC-03F20C-02G 20' SEA CONTAINERS, (2006/03), Racking
- 1 – SHANGHAI MODEL AIS-DSC-22-35 20' SEA CONTAINER, (1999), (2) Roll-Up Doors
- 10 – JINDO & NORTH QUEEN MODEL JS-D24PS-A 20' SEA CONTAINERS, (1998/95)

### ON-SITE OFFICE TRAILERS

- 1 – MILLER MODEL 1150 23' X 8' TWO-DOOR OFFICE TRAILER, S/N 1086235182
- 1 – JOB-CITE 10' X 16' OFFICE TRAILER
- 1 – 10' X 40' TWO-DOOR OFFICE TRAILER

### (7) CARGO TRAILERS

- 3 – UNITED EXPRESS MODEL U-714TA35-8.5 7' X 14' TANDEM AXLE CARGO TRAILERS, VIN 48BTE1427CA119877 / VIN 48BTE1421BA112440 / VIN 48BTE1425CA127380, (All 2011), with Ramp Door
- 1 – CORN PRO MODEL VT-18H 18' TANDEM AXLE FLAT BED TRAILER, (2009), VIN 4MJUB18249E05169
- 1 – AMERICAN HAULER 7' X 14' TANDEM AXLE CARGO TRAILER, with Ramp Door
- 1 – CARMATE 6' X 12' TANDEM AXLE CARGO TRAILER, VIN 5A3C714D0YL004479, with Barn Doors
- 1 – 6' X 10' SINGLE AXLE CARGO TRAILER

### AIR COMPRESSOR

- 1 – INGERSOLL RAND MODEL AIR SOURCE PLUS 185 PORTABLE AIR COMPRESSOR, S/N 401513UESD09 / 4FVCABAAX8U40151, (2008), 185 cfm, 1015 Hrs, Trailer Mounted

### LIGHT TOWER

- 1 – MAGNUM MODEL MLT3060MMH PORTABLE LIGHT TOWER, S/N 70036, (2006), 237 Hrs

### WIRE REEL TRAILER

- 1 – CUSTOM BUILT SINGLE AXLE WIRE REEL TRAILER, VIN 2T9A4GFGYM007013

### UTILITY POLE TRAILER

- 1 – TJ WELDING P900D 28' UTILITY POLE TRAILER, VIN 2T91B5TL2XMOO7010, (1999), 15,000 Lbs Capacity



# TRUCKS • TOOLROOM & SHOP SUPPORT EQUIPMENT



## TAR KETTLE

1 – TRAILER MOUNTED TAR KETTLE

## CONCRETE SAWS

2 – ELECTROLUX MODEL TARGET PRO 35II STANDARD GAS POWERED CONCRETE SAWS, (2006), 846/1045 Hrs

## (9) PLATE TAMPERS

5 – WACKER-NEUSON MODEL RAMMER BS50-4S TAMPERS

2 – DYNAPAC MODEL LT5000 TAMPERS

2 – WACKER MODEL WP1550AW TAMPERS

## CORE DRILL

1 – HILTI MODEL DCMII CORE DRILL

## PORTABLE GEN SETS

1 – YAMAHA GAS POWERED GENERATOR, 5,500 Watt

1 – INTERNATIONAL POWER MODEL BRAT 3000 GAS POWERED GENERATOR

1 – POWER STROKE 3,500 WATT GAS POWERED GENERATOR

## WELDERS

3 – THERMAL ARC MASTER 501

3 – THERMAL ARC POWER MASTER 500P

2 – MILLER AUTO INVISION

## RADIO DETECTION LOCATORS

2 – RADIO DETECTION MODEL RD7000 UTILITY CABLE & PIPE LOCATORS

## SURVEY TRANSIT

1 – SOKKIA NET 2100 MODEL D21825 STATION SURVEYING STATION, S/N 27001, Case and Tripod

## (7) CUT-OFF SAWS

5 – STIHL MODEL TS400 SERIES COLD CUT SAWS

2 – TARGET SAWS

## ROLL-OFF BINS

2 – 20 YARD ROLL-OFF BINS

## (2) PICK-UP TRUCKS

1 – 2006 CHEVROLET SILVERADO DIESEL PICK-UP TRUCK, VIN# 1GCHC24215E283195

1 – 2007 CHEVROLET SILVERADO GAS PICK-UP TRUCK, VIN# 1GBHC24KX7E513713, 85,000 Km

## FORKLIFT

1 – CATERPILLAR MODEL T40D FORKLIFT, S/N 8EB2286, 4,000 Lbs Capacity, 2-Stage LPG, 173" Lift

## TWO POST CAR HOIST

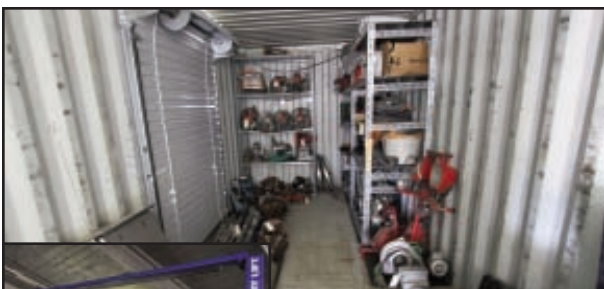
1 – ROTARY TWO POST 10,000 LBS CAR LIFT

## TOOLROOM & SHOP SUPPORT EQUIPMENT

**QUANTITY OF SHOP & SUPPORT EQUIPMENT, Including:** Motorvac IDT-4000 Diesel Line Cleaning System, Robinair 347002 Air Conditioning Recharge System, Parts Washer, Hydraulic Press, Truck Ramps, Battery Chargers, Torch Set, Bench Grinder, Vises, Car & Truck Parts, Tool Boxes, Pressure Washer, Pedestal Fans, Vacuums, Air Compressor, Flammable Cabinets, Nuts & Bolts, Truck Service & Repair Manuals, Oil, Graco President Pneumatic Pump, Jib Crane with 1/2 Ton Electric Hoist, Truck Body with Contents, Greenline 2448 Storage Box, 24" H x 48" L x 24" W, Greenline 2448 Storage/Job Boxes 24" H x 48" L x 24" W, Spool Unwinder, Hydraulic Jacks, Street Markers, Whole Saw, Hand Tools, Conduit Elbows, Greenline Storage Bins, Hand & Power Tools, Congo Gun, Survey Equipment, Testing Equipment, (3) Multi-Van/Unicell 8' x 20' Truck Body, Steel Parts Bins, Fiberglass/Wood Extension & A-Frame Ladders, Nature Call Portable Toilet, Warehouse Pallet Racking, Tripods, Power Invertors, Drill Press, Misc. Electronics, Lift Cage, Napster Traffic Control Module, Light Bulbs, Pump Carts, Test Equipment, Street Signs, Aluminum Conduit, Sign Posts, Anchors, Plastic Conduit, Street Lights, Construction & Street Signs, Traffic Signs, Truck Tool Boxes, Work Benches, Steel Cages, Conduit, Barricades, Assorted Traffic Light Components, Wood/Concrete Utility Poles, Etc.

## OFFICE EQUIPMENT

**QUANTITY OF OFFICE EQUIPMENT, Including:** Office Work Stations with Overhead Storage, Desks, Chairs, Computers & Laptops, Laser Printers, Lateral & Vertical Filing Cabinets, Photo Copiers, Phone System, Security System....Plus Much More!



Partial Listing Only, Please Visit Our Website

[www.hilcoind.com](http://www.hilcoind.com)

For Complete Lot Catalog



# Hilco Industrial **WEBCAST/ONSITE AUCTION**

As Authorized by the  
Court Approved Receiver



**STACEY ELECTRIC<sup>®</sup>**  
COMPANY LIMITED

## Huge Offering of Electrical Inventory & Equipment including More than \$750,000 in New Wire Inventory



**Thursday, September 25<sup>th</sup> • 10:00 am Local Time  
Toronto (Ontario), Canada**

### Terms of Sale

A 15% buyer's premium will be charged for all onsite sales. An 18% buyer's premium will be charged for all Bidspotter sales. Everything will be sold to the highest bidder for cash, in accordance with the Auctioneer's customary "Terms of Sale", copies of which will be posted on the premises of the sale and subject to additional terms announced the day of sale. All items will be sold "as is, where-is" without any warranties, express or implied. Although obtained from sources deemed reliable, the Auctioneer makes no warranty or guarantee to the accuracy of the information herein contained. Bidders are encouraged to thoroughly inspect the items on which they intend to bid prior to sale. Absolutely no items will be removed until the day after the conclusion of the sale and payment is made in full. For updated information, please visit our website at [www.hilcoind.com](http://www.hilcoind.com) for any changes to date, sale process, terms and conditions and list of available assets.

### Payment:

INVOICES WILL BE EMAILED WITHIN 24 HOURS AFTER THE AUCTION CLOSES. Accepting Canadian currency only. Payment Options: VISA, Mastercard and Discover accepted – if invoice total is \$2,000 or less; Wire Transfer; Certified Cheque; or Company Cheque (with Bank letter of guarantee – see sample letter below). All sales are subject to sales tax. Purchasers claiming exemptions from taxes must provide proof satisfactory to the Auctioneer of their entitlement to claim such exemptions. Please see complete terms and conditions on our website, [www.hilcoind.com](http://www.hilcoind.com).

### Sample Bank Letter

(Bank Name) unconditionally guarantees payment to Hilco Asset Sales Canada from (Company Name). This guarantee will be valid for purchases made at the Auction of Stacey Electric Company Limited on September 25, 2014.



Follow Us on:



A Hilco Global Company  
Vested in Your Success